

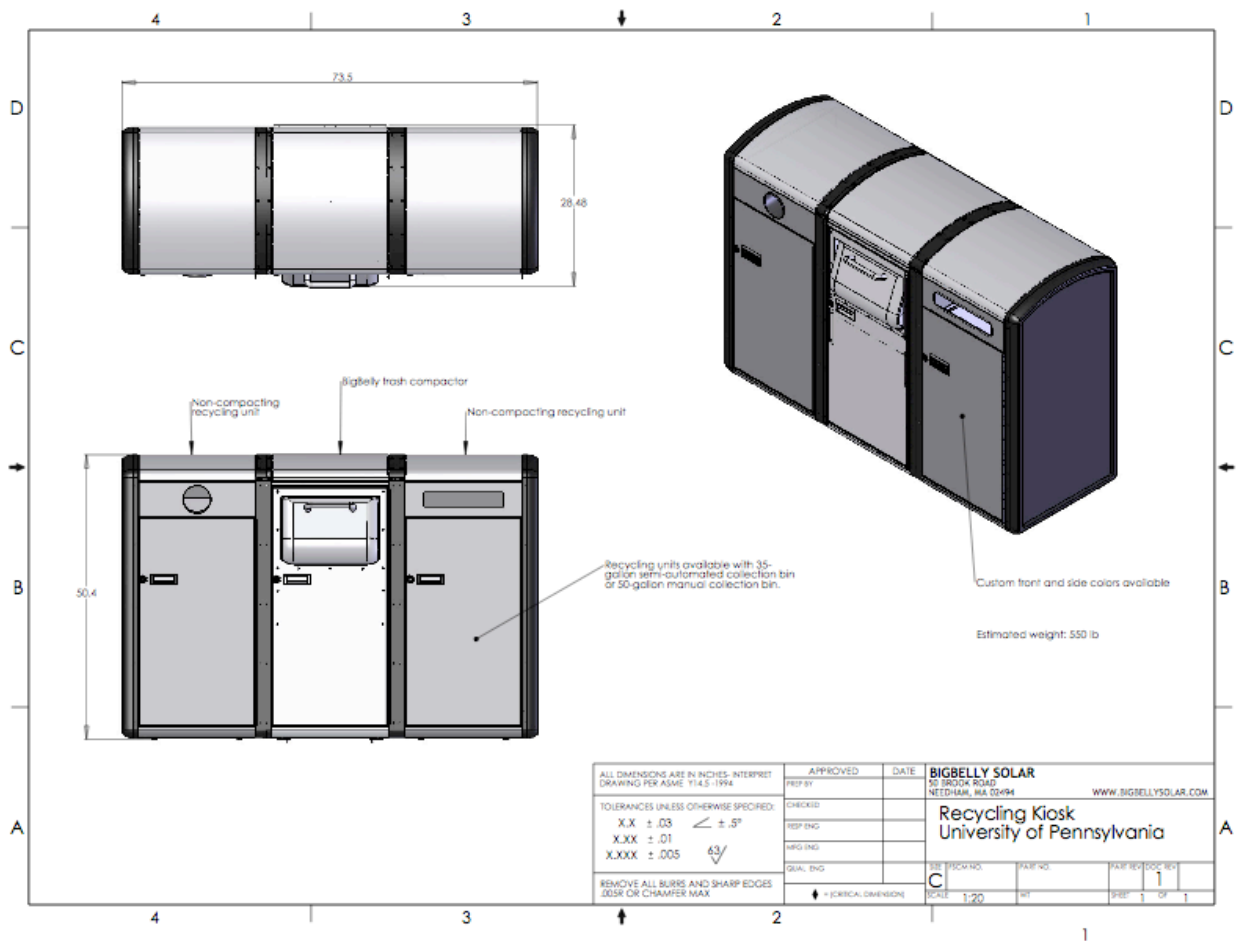


Recycling Units and Kiosk Product Brief

Committed to a better Environment

The addition of recycling units help BigBelly Solar make progress on its mission to improve the global environment by creating unique solar powered products that enable businesses and communities to improve inefficient and polluting operations and reduce their dependence upon fossil fuels. By removing recyclables from the waste stream further efficiencies are gained in the collection process.

Our recycling kiosk is designed to be flexible and modular while integrating recycling side containers with the BigBelly solar powered trash compactor. The final product can be configured in several ways to handle a variety of waste and recycling needs. It will be initially produced as configured below due to outstanding orders.



Paper and Cardboard

One of the recycling modules is a side container designed to specifically handle for newspaper, magazines and cardboard. The broad, narrow slot is designed to encourage select paper and cardboard while discouraging other waste products. The enclosed design is water resistant which is important with paper recycling and the bin can handle 35-50 gallons of non-compacted paper depending on the type of bin is required for collection.

Bottles and Cans

The other module is designed to hold bottles and cans. The flush mounted opening for bottles and cans is designed to accept up to a litter size bottle. The opening also has a chute and flap behind it to keep bees and insects out of the recycled bottles and away from people. The enclosed design is water resistant and the interior bin is water proof to contain any spilled liquids. The bin capacity is 35-50 gallons of non-compacted recyclables depending on whether a manual or semi-automated collection mechanism is used.

Both modules are clearly marked with internationally recognizable symbols and can be color-coded to make it easier to deposit recyclables correctly in each compartment and avoid contamination of the recycle and waste stream. Both recycling side units share the same materials and design cues of the BigBelly resulting in a cohesive system that is aesthetically appealing and environmentally friendly.

Environmental footprint

BigBelly is RoHs compliant, which means it has no lead or heavy metals. We have no lead in our circuit boards and no chromium in our plating. This is probably a full decade ahead of current American manufacturing standards and is EU Compliant. BigBelly black side skins use ABS plastic that contains 80-100 % post consumer recycled plastic. Other color side panels are of recyclable plastic.

We powder coat our recycled steel content, which is the most environmentally safe way to protect it. We use standard lead acid batteries, which are reliable, and are 95+% recycled. We have made extensive efforts to reduce the packaging and weight of the BigBelly to make it more efficient to ship and deploy.

BigBelly is made in America to lower transportation distances, control quality and keep local jobs. We choose and continually review our suppliers to insure they are meeting or exceeding EPA and local environmental standards

Timelines:

The prototype will be completed by Q4 2007 and our first Commercial Products are expected to be available in Q1 2008. Orders for the first production run are currently being accepted.